



U.S. DOE Office of Special Education Programs (OSEP) Monitoring and Support System for Hawaii



Due Feb. 1st
each year

1 Hawaii's SPP/APR

This required state performance plan (SPP) and annual performance report (APR) measures our progress towards meeting special education targets on 16 indicators (like graduation rate, LRE, student achievement, drop-out rate, parent participation, disproportionality, etc.)



Due April 1st
each year

2 Hawaii's SSIP

The State Systemic Improvement Plan makes up Indicator 17 on the APR. It is a six-year plan targeting an area of student functioning critical to long term success. Hawaii selected **reading achievement of 3rd and 4th graders** as its main measurement of how the system is improving to provide better outcomes for these students.



Technical
Assistance

4 Differentiated Monitoring & Support

OSEP's DMS system of determining what kind of technical assistance a state may require looks at four main components:

- ✓ compliance with IDEA regulations
- ✓ student performance outcomes
- ✓ the SSIP, and
- ✓ fiscal (how money is spent).



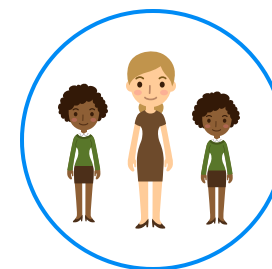
Determination
arrives in June

3 Annual Determination Letter

OSEP reviews the APR and the SSIP sent earlier that year and makes a determination of the extent the state meets the requirements of IDEA. It then places Hawaii in one of 4 categories:

- Meets requirements
- Needs assistance *
- Needs intervention
- Needs substantial intervention

* Note: Hawaii has been in the **Needs assistance** category for the last five years.



5 Site Visit

An **OSEP DMS team** visited Hawaii January 7-11, 2019 to conduct intensive monitoring and support to both early intervention & special education.

Team members included:
Jennifer Barrett-Zitkus, Part B & C State Contact,
Angela Tanner Dean, Team Leader, and
Christine Pilgrim, Team Member

Their main areas of technical assistance were related to the following:

- improving math and reading performance outcomes for students, and
- offering tools and suggestions to make the SSIP more effective.