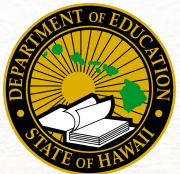




# Indicator 14: Post-School Outcomes

December 9, 2022



Monitoring and Compliance Branch  
Exceptional Support Branch

Special Education Advisory Council





# Agenda

- Short review of the monitoring priorities for:
  - Indicator 14: Post-School Outcomes
- Performance since the establishment of the baseline
- Current strategies for improvement
- Discussion of new ideas and strategies for improvement



## Indicator 14: Post-School Outcomes

Indicator 14 measures the percent of youth who are no longer in secondary school, had IEPs in effect at the time they left school, and were:

- A. Enrolled in higher education within one year of leaving high school.
- B. Enrolled in higher education or competitively employed within one year of leaving high school.
- C. Enrolled in higher education or in some other postsecondary education or training program; or competitively employed or in some other employment within one year of leaving high school.

*(20 U.S.C. 416(a)(3)(B))*



# Post-School Outcomes

## Higher Education



- Enrolled full- or part-time
- Completed at least 1 term at any time in the year since leaving high school
- Community college (2-year program) or
- College/university (4- or more year program)

## Competitive Employment



- Worked for pay at or above the minimum wage
- In a setting with others who do not have a disability
- 20 hours a week
- 90 days at any time in the year since leaving high school
- Includes military

## Other Post Secondary Education or Training



- Enrolled full- or part-time
- Completed at least 1 term at any time in the year since leaving high school
- Education or training program (e.g., Job Corps, adult education, workforce development program, etc.)

## Other Employment



- Worked for compensation below minimum wage
- 90 days at any time in the year since leaving high school



# Data Collection Criteria

## Students exit DOE

School Year 2020-2021

- Diploma
- Certificate
- Maximum Age
- Dropped Out

One year later

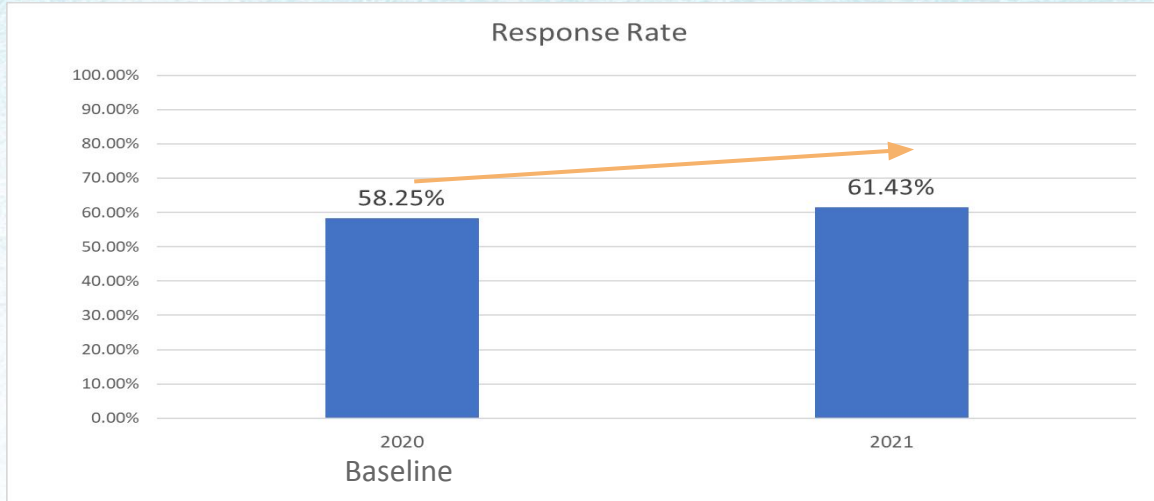
## Survey conducted

School Year 2022-2023

- August - September
- Phone, Online, or Paper



# Indicator 14: Response Rate Upward Trend



FFY	2020 Baseline	2021
Survey Respondents	713	779
Total Exited	1224	1268
Response Rate	58.25%	61.43%



# Representativeness Demographics

Beginning with the FFY 2021 SPP/APR, due Feb. 1, 2023, when reporting the extent to which the demographics of respondents are representative of the demographics of youth who are no longer in secondary school and had IEPs in effect at the time they left school, States must include **race and ethnicity** in its analysis.

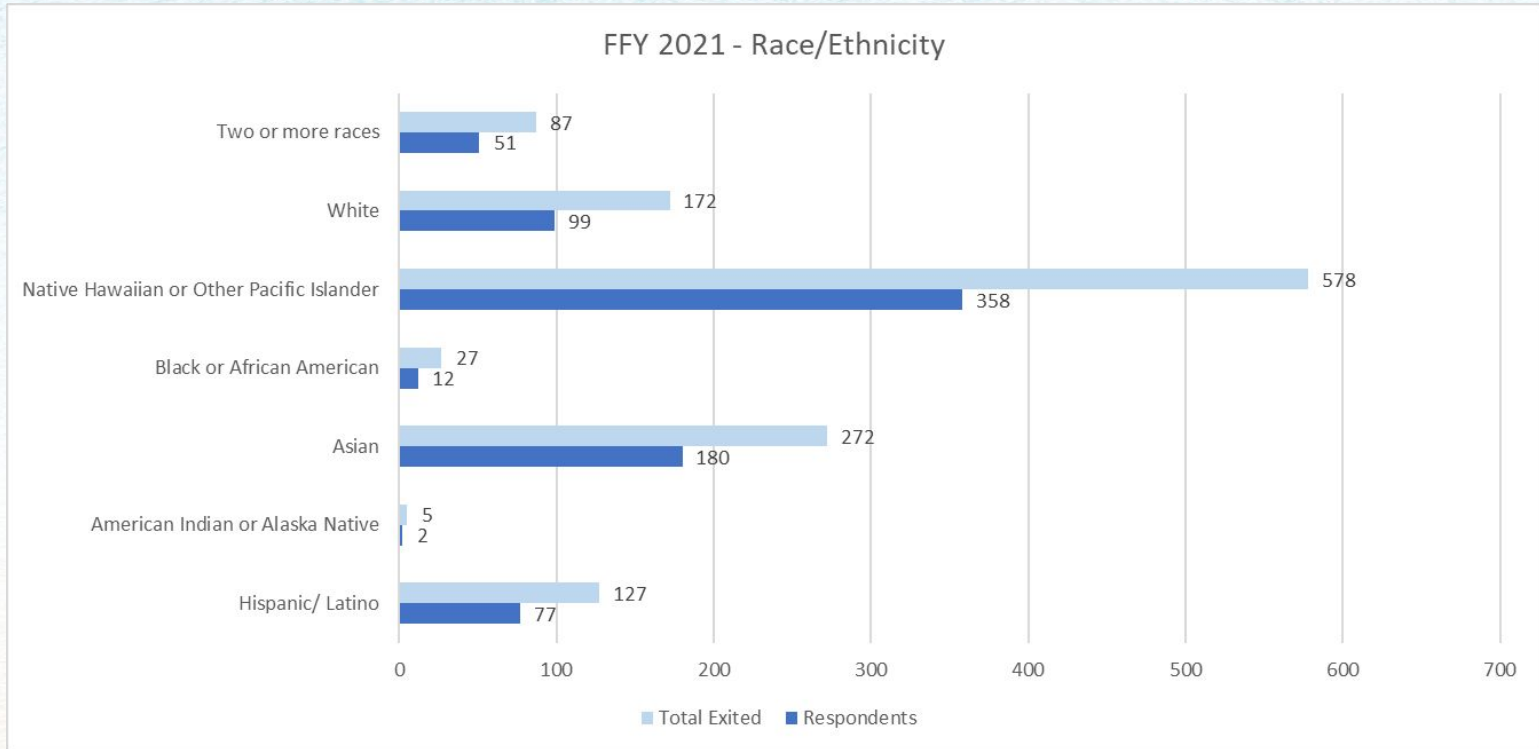
In addition, the State's analysis must include **at least one of the following demographics:**

- **disability category,**
- **gender,**
- **geographic location, and/or**
- **another demographic category - type of exit**



# Respondent Demographics

## Race/Ethnicity

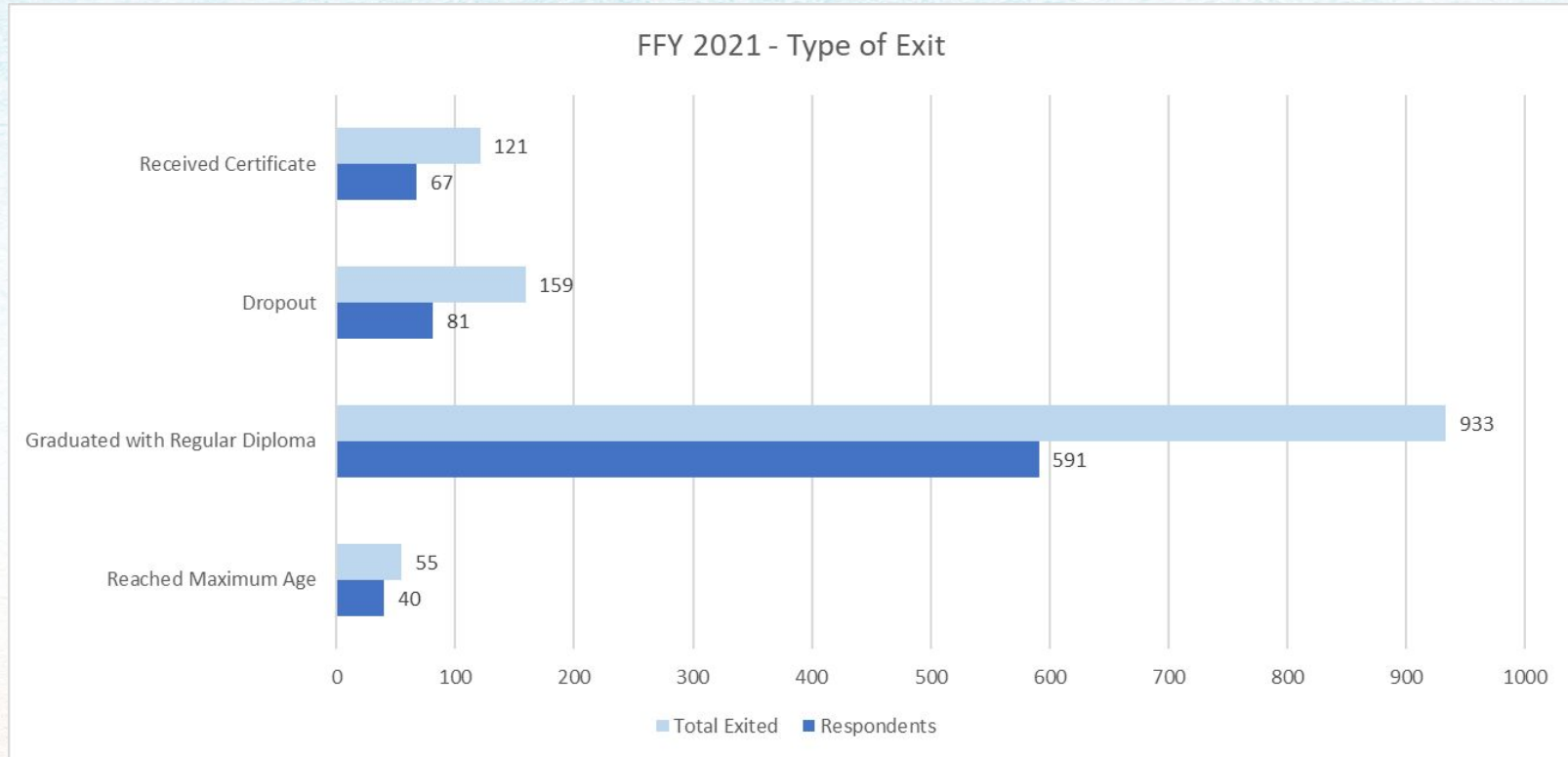






# Respondent Demographics

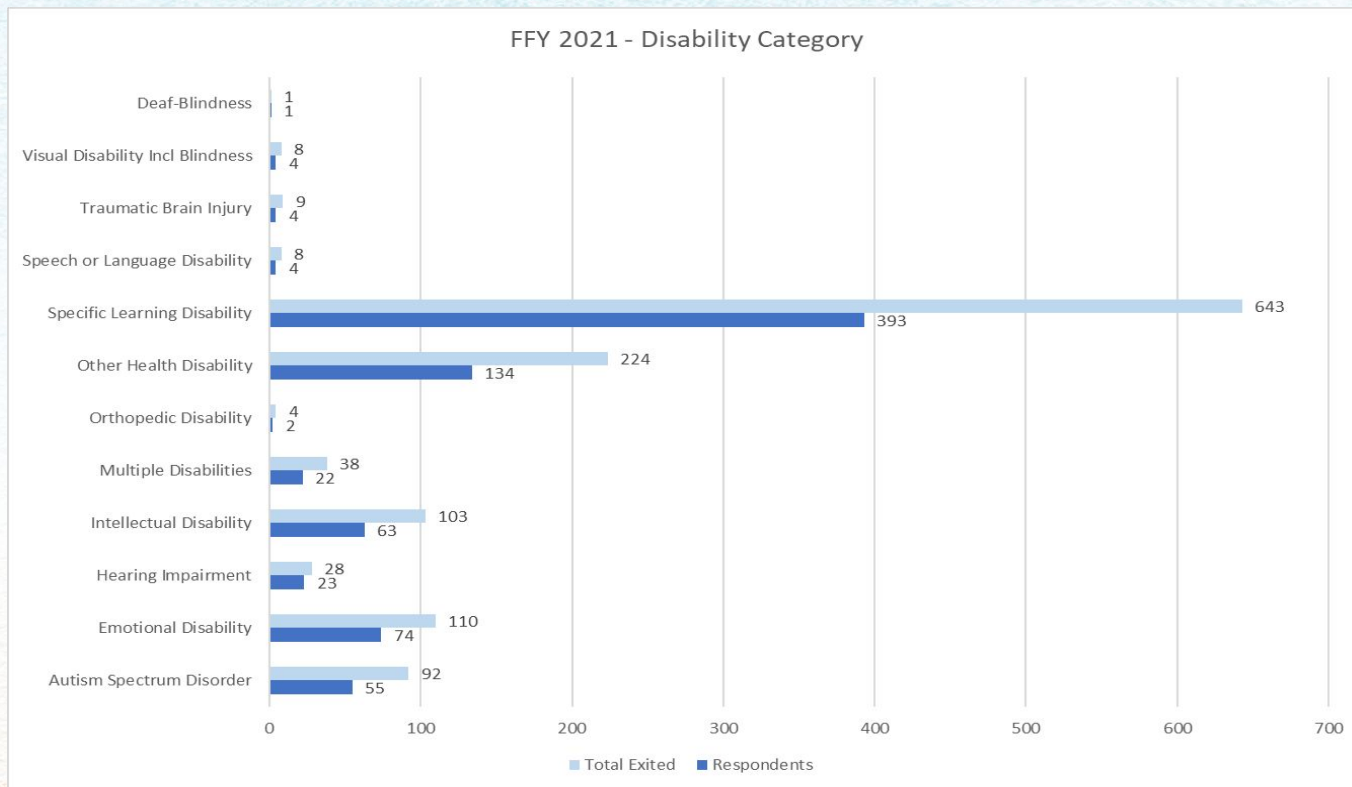
## Type of Exit





# Respondent Demographics

## Disability Category





# Current Improvement Strategies

- **Updated Process and Procedures**
  - Statewide Training
  - Online Dashboard
  - Ongoing support to staff at the school level
  
- **Online Survey**
  
- **Informational Flyer**
  - Raise Awareness/Understanding
  - Collect Updated Contact Information



# Post-School Outcomes Survey Informational Flyer



## POST-SCHOOL OUTCOMES SURVEY

Hawaii State Department of Education  
(HIDOE)

What will you be doing one year from now?  
We want to know!

### WHO

Former HIDOE students/  
family members

This survey is voluntary, and your  
information will be kept secure  
and confidential.

### WHEN

In the Fall of 2023, a school or  
district staff member will  
contact you to respond to the  
Post-School Outcomes Survey

Please respond!

### WHAT

Questions are asked about:

**EMPLOYMENT:** Are you working? What are you doing for work?

**EDUCATION/TRAINING:** Are you going to school? Are you receiving training?

**HIGH SCHOOL EXPERIENCES:** Did high school help to prepare you for life?

### WHY

HIDOE is required to annually report  
on Post-School Outcomes of our  
students one year after leaving high  
school. The reports are available on  
the HIDOE website.

The information you share helps  
HIDOE to improve services and  
programs for current and future  
students.

### HOW

You may respond to the survey.  
**ONLINE:** survey link will be sent to you  
or

**PHONE:** someone will call you

Accommodations to access a paper copy  
survey are provided as needed.

It takes about 10 minutes to complete.

### CONTACT INFORMATION

Please provide your contact  
information so we can reach out to  
you next year!

Scan the QR code or use this link:  
<https://bit.ly/HISudent>





# Indicator 14: Performance

		2020	2021
14A	Target	Baseline	23.10%
	Data	<b>19.78%</b>	<b>21.69%</b>
14B	Target	Baseline	73.70%
	Data	<b>70.69%</b>	<b>69.19%</b>
14C	Target	Baseline	78.90%
	Data	<b>75.32%</b>	<b>78.81%</b>

- A. Enrolled in higher education within one year of leaving high school.
- B. Enrolled in higher education or competitively employed within one year of leaving high school.
- C. Enrolled in higher education or in some other postsecondary education or training program; or competitively employed or in some other employment within one year of leaving high school.



# Indicator 14A: Data Measurement

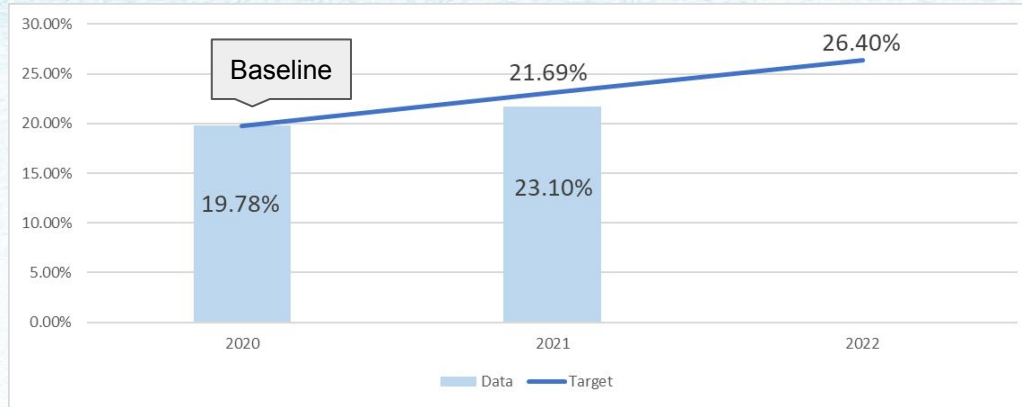
- **14A** = Enrolled in higher education within one year of leaving high school
- **Percent enrolled in higher education** = [(# of youth who are no longer in secondary school, had IEPs in effect at the time they left school, and were enrolled in higher education within one year of leaving high school) **divided by the** (# of respondent youth who are no longer in secondary school and had IEPs in effect at the time they left school)] **times 100**.

$$\text{Percent} = \frac{\text{Respondents enrolled in higher education}}{\text{Total respondents}} \times 100$$



# Indicator 14A: Performance

Percentage enrolled in higher education within a year after high school:



FFY	2020	2021	2022	2023	2024	2025
Target	Baseline	23.10%	26.40%	29.70%	33.00%	<b>36.30%</b>
Data	19.78%	21.69%				

Increase by 3.3% each year to reach 36.30%



## Indicator 14B: Data Measurement

- **14B** = Enrolled in higher education or competitively employed within one year of leaving high school.
- **Percent enrolled in higher education or competitively employed within one year of leaving high school** = [(# of youth who are no longer in secondary school, had IEPs in effect at the time they left school and were enrolled in higher education or competitively employed - for a period of 20 hours per week for at least 90 days - within one year of leaving high school) **divided by the** (# of respondent youth who are no longer in secondary school and had IEPs in effect at the time they left school)] **times 100**.

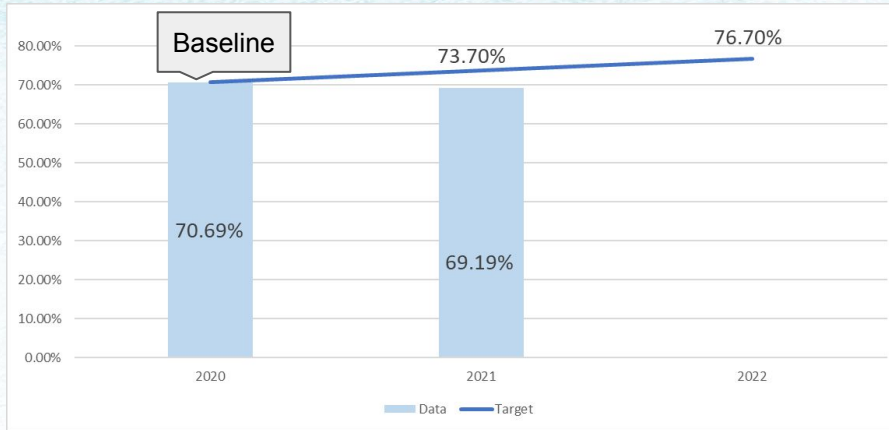
$$\text{Percent} = \frac{\text{Respondents enrolled in higher education or competitively employed}}{\text{Total respondents}} \times 100$$





# Indicator 14B: Longitudinal Data

Percentage enrolled in higher education or competitively employed within one year after high school:



FFY	2020	2021	2022	2023	2024	2025
Target	Baseline	73.70%	76.70%	79.70%	82.70%	<b>85.70%</b>
Data	70.69%	69.19%				

Increase by 3% each year to reach 85.70%



# Indicator 14C: Data Measurement

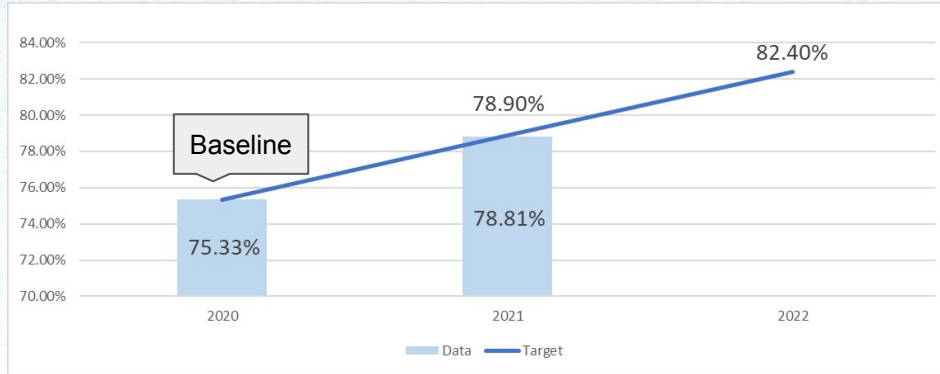
- **14C** = Enrolled in higher education or in some other postsecondary education or training program; or competitively employed or in some other employment within one year of leaving high school.
- **Percent enrolled in higher education, or in some other postsecondary education or training program; or competitively employed or in some other employment** = [(# of youth who are no longer in secondary school, had IEPs in effect at the time they left school and were enrolled in higher education, or in some other postsecondary education or training program – for at least one complete term; or competitively employed or in some other employment – for at least 90 days – in the year since leaving high school) **divided by the** (# of respondent youth who are no longer in secondary school and had IEPs in effect at the time they left school)] **times 100**.

$$\text{Percent} = \frac{\text{Respondents enrolled in higher education or in some other postsecondary education or training program; or competitively employed or in some other employment}}{\text{Total respondents}} \times 100$$



# Indicator 14C: Performance

Percentage enrolled in higher education or other postsecondary education or training program; or competitively employed or in some other employment within one year after high school:



FFY	2020	2021	2022	2023	2024	2025
Target	Baseline	78.90%	82.40%	86.00%	89.50%	93.10%
Data	75.33%	78.81%				



# Indicator 14B: Current Improvement Strategies

To improve the percentage of students with disabilities enrolled in higher education or become competitively employed after exiting the Department, the following strategies have been in place:

- built relationships with State CTE to build access to training and resources;
- participated in the Workforce and Employment First committee to encourage community partners to competitively employ students with disabilities; and
- continued quarterly meetings with DDD, DVR and CDS with emphasis on bridging all community support for students.



# Coming Soon!

## Post-School Outcomes Improvement Strategies

### Higher Education



- Center on Disability Studies Program
- College and Career Counseling
- CTE Academies
- Self-Determination Programs

### Competitive Employment



- DVR
- LANAKILA
- Work-based learning partnerships and worksites
- CTE WBL Internships
- Project SEARCH and other related programs assisting in employment training

### Other Post Secondary Education or Training



- GED/Adult Education
- Trade/CC Programs
- Vocational Training Centers
- DVR CRPs

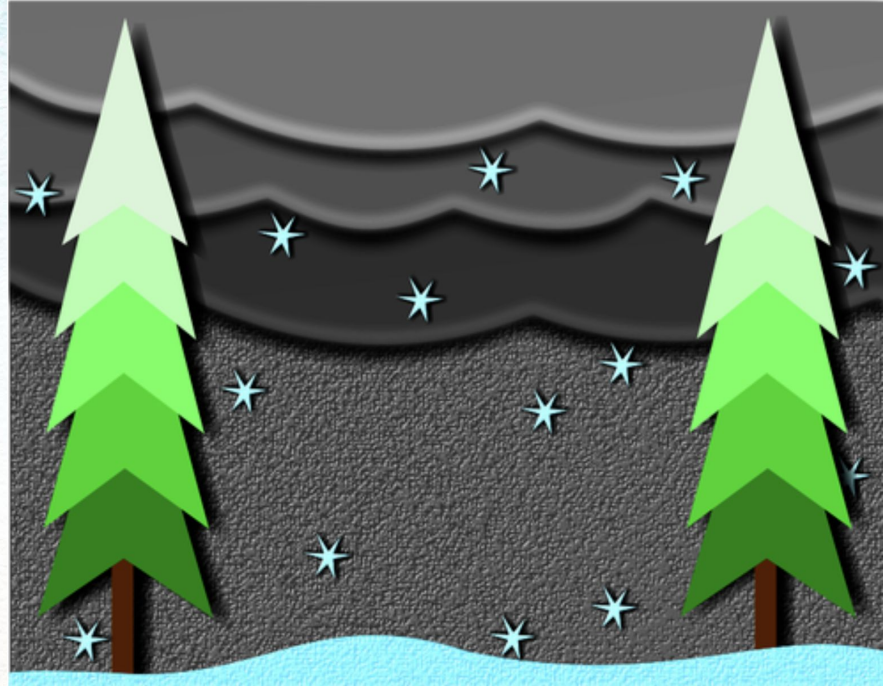
### Other Employment



- Youth Summits
- Leadership and Volunteer groups
- Internships
- Military enrollment
- Outer Island job identifications
- Self-employment



# Indicator 13 & 14: Improvement Strategies for Post-High School Outcomes



[Indicator 13 and 14 Jamboard](#)



# Reporting Out/Next Steps

Thank you for participating in the Post-School Outcomes Discussion Group!



Please leave this meeting and return to the Main Session.